

I COULD WRITE A BOOK

RICHARD RODGERS

KEY: MDL="Million Dollar Library"

RB = "Real Book" (Illegal)

RJS = Real Jazz Standards Fake Book (Hal Leonard)

NRB = "The New Real Book" (Chuck Sher)

JA = Jamey Aebersold

PC = "Pocket Changes"

DH = "All The Right Changes" (Dick Hyman)

FM = "The Best Chord Changes..." (Frank Mantooth)

FM	C^{Ma}7	A^{mi}9	D^{mi}11	G^{13b9(#11)}	C	A^{mi}7	D^{mi}11	G^{13b9(#11)}
DH	C	Am ⁷	Dm ⁷	G ⁹ G ⁷⁻⁹	C	C ^{Ma} 7	C ⁶	G ⁷⁻⁹
JA & PC	C	A⁷	D-	G⁷	C		D-	G⁷
RJS	C ^{ma} 7	A ^{mi} 7	D ^{mi} 7	G ⁷	E ^{mi} 7	A ⁷	D ^{mi} 7	G ⁷
RB	C^{Ma}7	A-⁷	D-⁷	G⁷	C^{Ma}7			G⁷
MDL	C	E ^{mi}	C	G ⁷	C			G ⁷

C^{Ma}7	F^{Ma}7	E^{mi}7	A+⁷(#9)	D^{mi}11	G⁷	F#^m7-5	Fdim
C	C ^{Ma} 7	C ⁶	C#dim	Dm ⁷	G ⁷		
C		A-		D-	Bø	E⁷+⁹	
C ^{ma} 7		E ^{mi} 7	A ⁷	D ^{mi} 7	Dm ⁷ /C	B ^{mi} 7(b5)	E ⁷
C^{Ma}7	G⁷	C^{Ma}7	C#^o7	D-⁷		G⁷	
C	G ⁷	C	C#0	Dm ⁷		G ⁷	F G ⁷

C/E	A^b7/E^b	D^{mi}7	G⁷	A^{mi}7	D⁷(b9)	G	C#^{mi}7(b5)	D/C
C/E	A ^b 7/E ^b	Dm ⁷	G ⁷	C ⁶	Cdim	G/B	C	Cdim
A-				F#ø	B⁷+⁹	E-		
A ^{mi} 7		D ⁷		F# ^{mi} 7(b5)	B ⁷	E ^{mi} 7		
C/E	A^b7/E^b	D-⁷	G⁷	A-⁷	D⁷b⁹	G^{Ma}7	B⁷	
C	A ^b 7	Dm ⁷	G ⁷	C	F#0	G	C	F#0

G/B	E^b7/B^b	A^{mi}7	D⁷	G¹¹	G⁷(b9)		
G/B	E ^b 7/B ^b	Am ⁷	Am ⁷ /D D ⁷⁻⁹	G ⁷	Dm ⁷	G ⁷	G ⁷⁻⁹
A⁷		A-	D⁷	D-		G⁷	
A ^{mi} 7		D ⁷		D ^{mi} 7		G ⁷	
E-		A-⁷	D⁷	D-⁷		G⁷	
G	E ^b 7	Am ⁷	D ⁷	G	Dm ⁷	G ⁷	

I SHOULD CARE

SAMMY CAHN

KEY: MDL="Million Dollar Library"

RB = "Real Book" (Illegal)

RJS = Real Jazz Standards Fake Book (Hal Leonard)

NRB = "The New Real Book" (Chuck Sher)

JA = Jamey Aebersold

PC = "Pocket Changes"

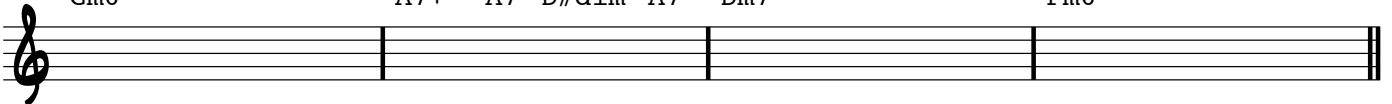
DH = "All The Right Changes" (Dick Hyman)

FM = "The Best Chord Changes..." (Frank Mantooth)

JA	D-	G ⁷	C		D-	G ⁷	C
FM	Dmi7	G13(b9)	CMA7	A9sus	Dmi7	G7sus	G7 CMA7
PC	D-	G ⁷	C	A ⁷	D-	G ⁷	C
NRB	Dmi ⁷	G ⁹ sus ⁴⁻³	Emi ⁷	A ⁹	Dmi ⁷	G ⁹ sus	CMA ⁷
RB	D- ⁷	G ⁷	E- ⁷	A ⁷	D- ⁷	G ⁷	CMA ⁷
MDL	Dm7	G9	Cmaj7		Dm7	G9	Cmaj7



E [∅]	A ^{7b9}	D-	F-	B ^{b7}
E7#9(#11)	A7sus	A+7(#9)	Dmi11	Bb7sus
E [∅]	A ⁷⁺⁹	D-	D-	B ^{b7}
Emi ^{7(b5)}	A ⁷	Dmi ⁷	Fmi ⁷	B ^{b9}
E- ^{7b5}	A ^{7sus4}	A ⁷	D- ⁷	F- ⁷
Gm6	A7+ A7 D#dim A7	Dm7	Fm6	B ^{b7}



A-	B-	E ⁷	C ⁷	F	
CMA ⁷	Bmi11	E7	Ami ⁷	E/F	FMA ⁷
C	B [∅]	E ⁷⁺⁹	G-	F	
Cma ⁷	Bmi ^{7(b5)}	E ⁷	Gmi ⁷	FMA ⁷	
CMA ⁷	B- ^{7b5}	E ⁷	G- ⁷	FMA ⁷	
Am	F Am Bm7	E7	C7	C9 Gm7 Fmaj7	



B [∅]	E ^{7b9}	A-	D ⁷	D-	G ⁷
Bmi ^{7(b5)}	E7(b9)	Ami	D9sus	D9	G9sus G7
B [∅]	E ⁷⁺⁹	A-	D ⁷	D ⁹	G ⁷
Bmi ^{7(b5)}	E7(b9)	Ami ⁷	Ami ⁷	D ⁹	Dmi ⁷ G ⁹
B- ^{7b5}	E ^{7b9}	A- ⁷	A- ⁷	D ⁷	G ⁷
Dm6	E7 (b9) E7	Am	D7	D9	Dm7 G7 Dm7 G7

